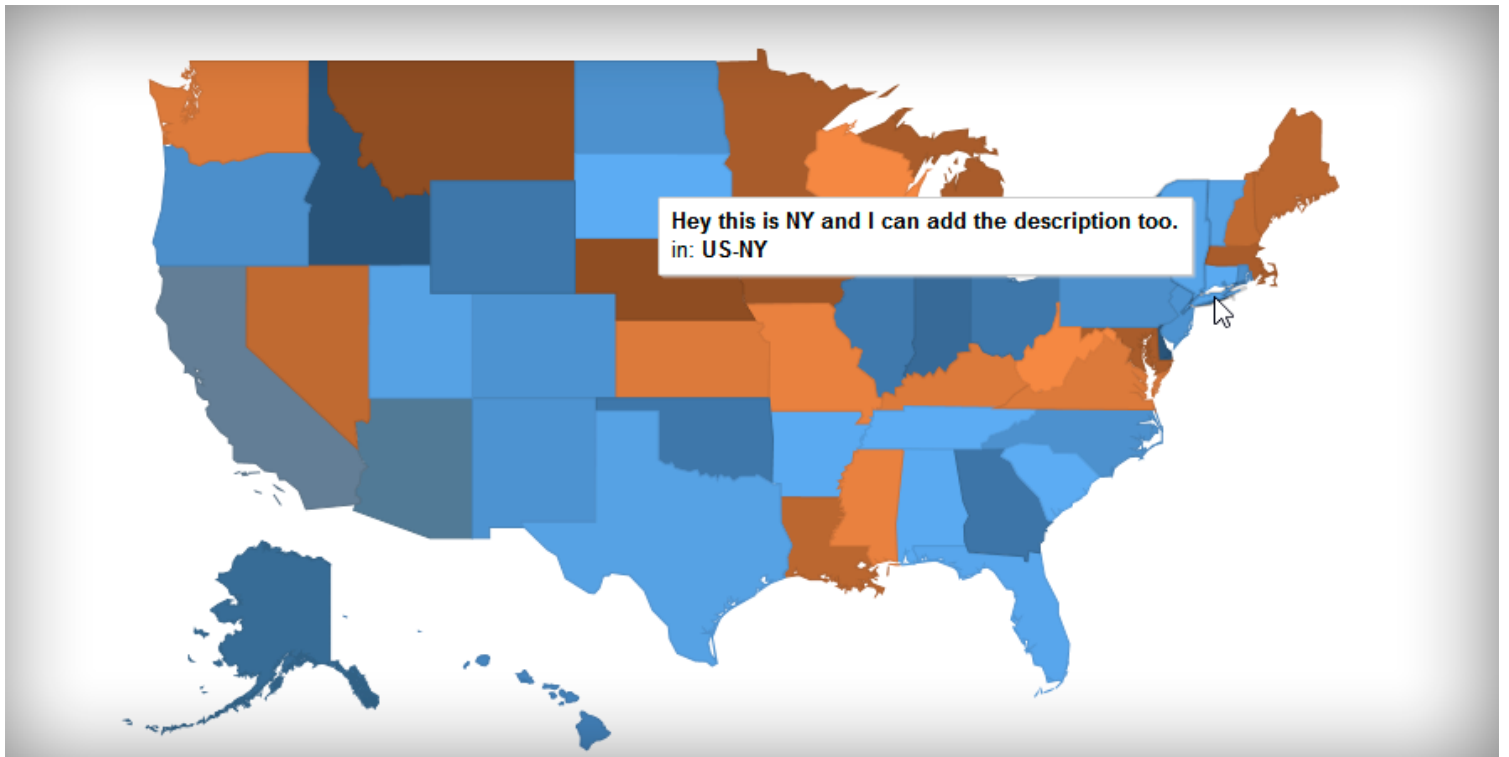


# Linky Map

---

The goal of Linky map is to display a clean vector map using Google chart with custom information.

- ✓ One install
- ✓ Each map is configured individually
- ✓ One module to display map with additional parameters
- ✓ One content plugin to add map in Joomla articles



INDEX

I. LINKY MAP INSTALL.....3

II. LINKY MAP COMPONENT.....4

2.1 Create a region map .....4

2.2 Create a marker map .....7

2.3 Configuration of the maps (region & marker).....9

III. DISPLAY A MAP ON FRONTEND ..... 10

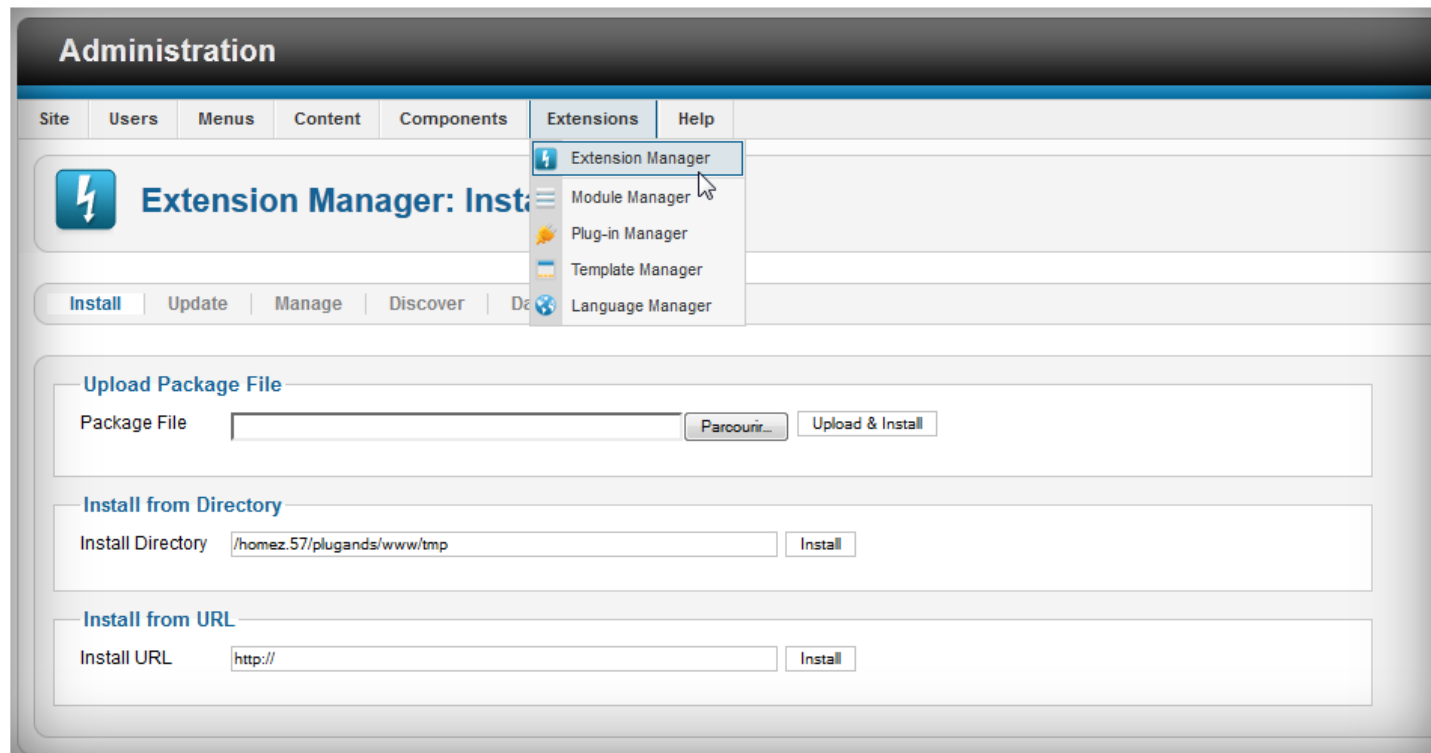
3.1 Using a menu.....10

3.2 Using the module .....12

3.3 Using the content plugin.....13

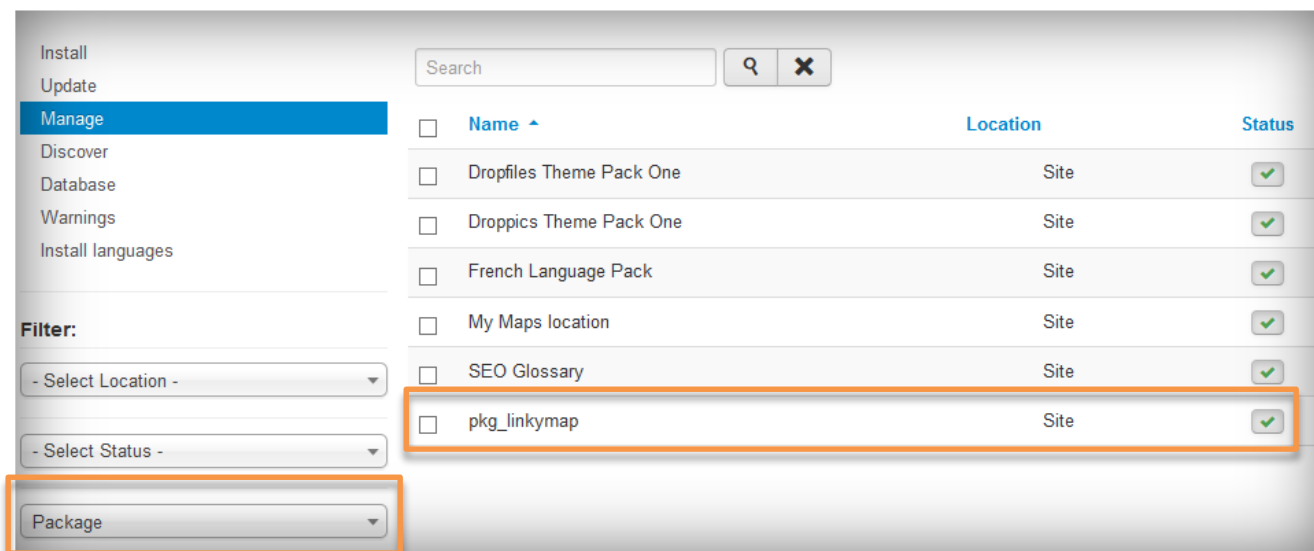
# I. LINKY MAP INSTALL

Our component is Joomla 2.5 and 3.0 compatible with 1 single version.  
In order to install our component you should use standard Joomla installer.



Then click on **Browse > Install & upload button**, component and plugins will be installed activated by default.

The extension is installed as a Joomla package, it means that all is installed in one click (component, module and plugin). In order to uninstall it simply select the package in the extension manager.



# II. LINKY MAP COMPONENT

## 2.1 Create a region map

A region map fills entire regions (typically countries or country region) with colors corresponding to the values that you've assigned. In order to create a region map click on the appropriate button.



To start editing a region map, first define a title for your map and a region to display. When a region is selected, you'll have a preview above the form with the colored regions.

A screenshot of a web form for configuring a region map. At the top, there is a toolbar with five buttons: 'Save' (green), 'Save & Close' (light green), 'Save & New' (light green), 'Save as Copy' (light green), and 'Close' (light green). Below the toolbar, the form has several fields. The 'Name \*' field contains 'Europe region' and is highlighted with an orange border. The 'Alias' field contains 'europe-region'. The 'Region' section has a 'Region to display \*' field. Below this field, there is a green banner with the text 'Europe - Western Europe- Help: Use uppercase ISO-3166'. To the right of the banner, a dropdown menu is open, showing a list of regions: 'Europe - Western Europe', 'euro', 'Europe', 'Europe - Subcontinents Regions', 'Europe - Northern Europe', 'Europe - Western Europe' (highlighted in blue), 'Europe - Eastern Europe', and 'Europe - Southern Europe'. A hand cursor is pointing at the top of the dropdown menu. Below the dropdown menu, there are fields for 'Region \*:', 'Title\*:', and 'Description\*:'.

Note: if you change the region map, region may not fit to the new map!

Map preview:



In order to add a region you have 2 solutions, using ISO code from Wikipedia (link generated in the component) or using predictive search.

For Wikipedia ISO code, just click on the link and take a reference from the region table.

Europe - Western Europe- Help: Use uppercase [ISO-3166-1](#) code or Name of the Region

**Ex. FR for France**

If you want to use our predictive search, just type the region name in the region field. Your selection will be automatically transformed in ISO code.

fr|

Central African Republic

France

French Guiana

French Polynesia

French Southern Territories

Saint Martin (French part)

South Africa

The title and description added to your region will be displayed as above.



You can also add a link for the region and a color.

Color:

#438094

Add

Region

Finally your fist region is added to the region map, you can edit all information or delete it if needed.

Region	Title	Link	Color	
FR	France	http://www.joomunited.com	#438094	<div>EditDelete</div>

Note: location are saved ONLY when you click on the standard Joomla save button (top of your screen)

## 2.2 Create a marker map

A marker map display specific point (typically a city) with colors corresponding to the values that you assign. In order to create a marker map click on the appropriate button.

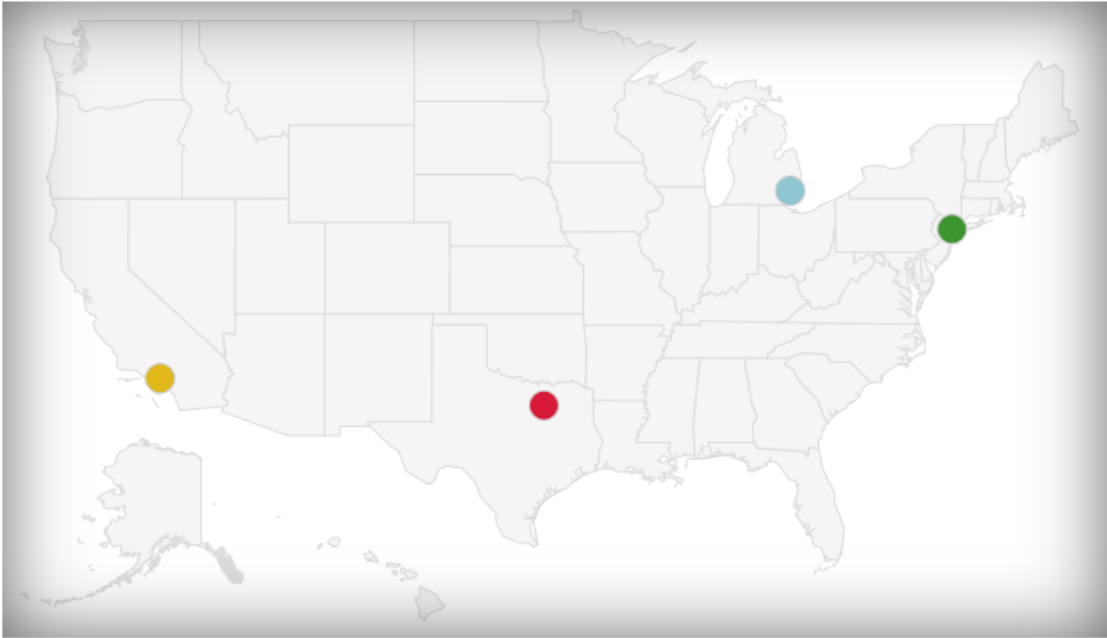


To start editing a marker map, first define a title for your map and a region to place your cities. When a region is selected, you'll have a preview above the form.

A screenshot of a web form for creating a marker map. At the top, there are five buttons: 'Save' (green), 'Save & Close' (green with checkmark), 'Save & New' (green with plus), 'Save as Copy' (grey with document icon), and 'Close' (grey with red X). Below these are input fields for 'Name \*' (containing 'USA'), 'Alias' (containing 'usa'), and 'Region to display \*'. A dropdown menu is open for the 'Region to display \*' field, showing a search bar with 'united s' and a list of options: 'United States of America - States', 'United States of America - Metropolitan Areas', 'United States - Provinces' (highlighted in blue), and 'United States Minor Outlying Islands - Provinces'. Other fields include 'Marker \*:', 'Title\*:', and 'Description\*:'.

Note: if you change the region map, places previously defined may not fit to the new map!

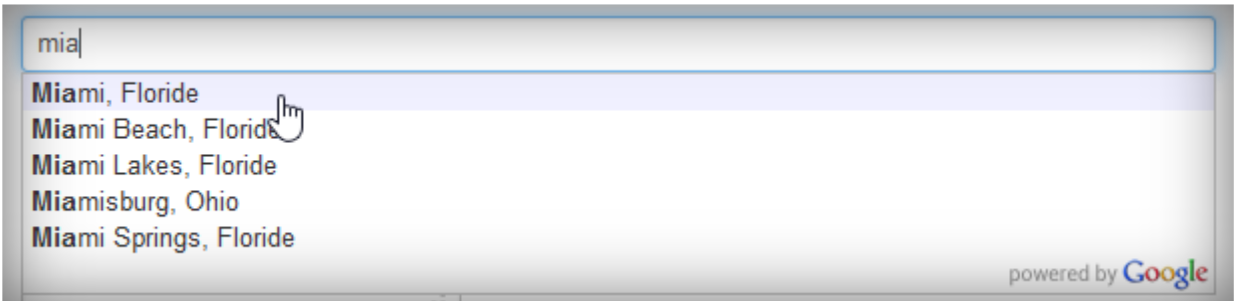
Map preview:



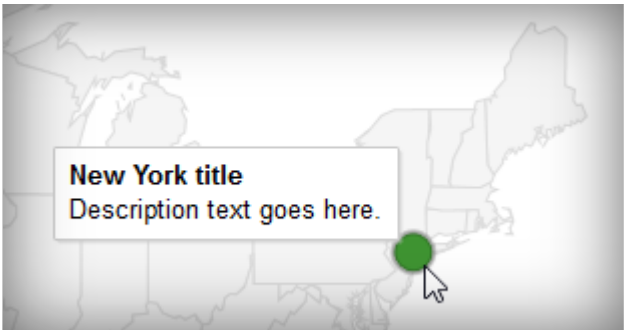
In order to add a marker, use our predictive search in the marker field.

If you want to use our predictive search, just type the region name in the region field. Your selection will be automatically transformed.

Ex. Miami



The title and description added to your region will be displayed as above.





You can also add a link for the region and a color.

Link:

http://www.joomunited.com

Color:

3F9432

Done


Cancel

Los Angeles, Californie



Finally your fist region is added to the region map, you can edit all information or delete it if needed.

Region	Title	Link	Color
New York City, État de New York	New York title	http://www.joomunited.com	#3F9432
Los Angeles, Californie	Los Angeles		#E0B819
Dallas, Texas	Texas		#D61A38
Détroit, Michigan	Michigan		#8FC6D1



Note: location are ONLY saved when you click on the standard Joomla save button (top of your screen)

## 2.3 Configuration of the maps (region & marker)

All maps have its own configuration, that's why there's no global parameters for the component.

Action	Open URL (new window) ▼
Background Color	#FFFFFF
Border Color	#CCCCCC
Border Width(PX)	0
Inactive Region Color	#F5F5F5
Marker Size (px)	10
Map Responsive	<input checked="" type="radio"/> Yes <input type="radio"/> No
Width (px)	850
Height (px)	500
Status	Published ▼
Language	All ▼

The action parameter define the type of the link added in your region or marker, i.e open in the same or in a new window. Width and height can also be fixed even if the map is responsive by default.

## III. DISPLAY A MAP ON FRONTEND

In order to display your location on frontend you can use:

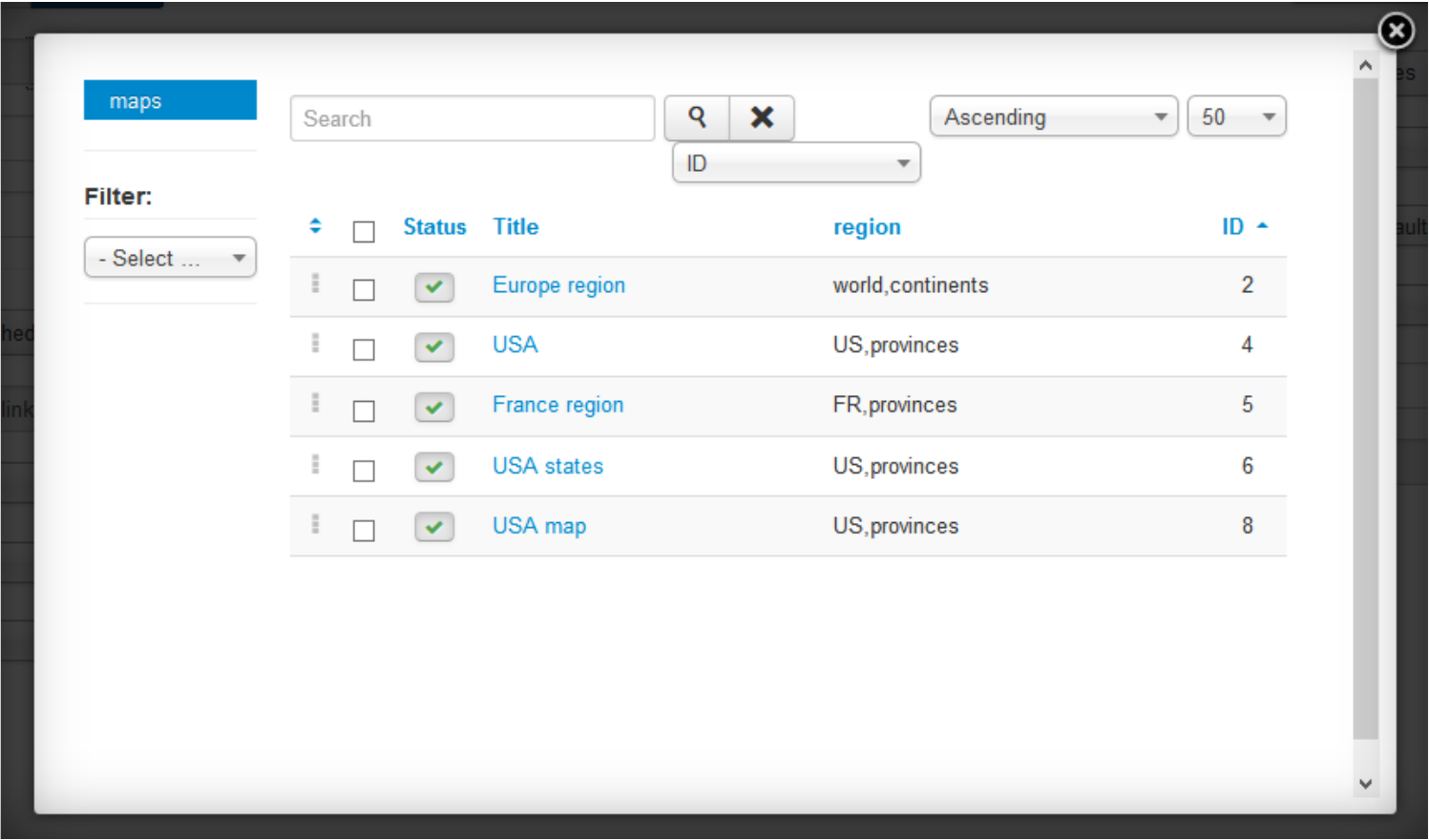
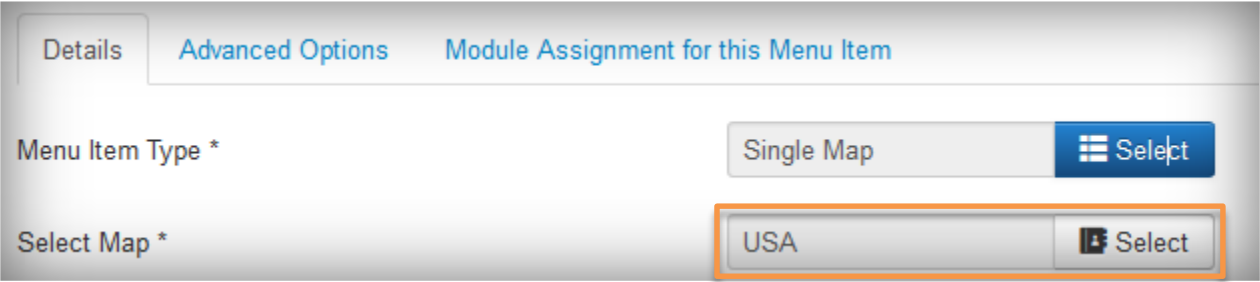
- ✓ A menu to display locations search or single location
- ✓ A module to display a search field
- ✓ A content plugin to display single location

### 3.1 Using a menu

Please go in the Joomla menu manager and add a “linky map” element.

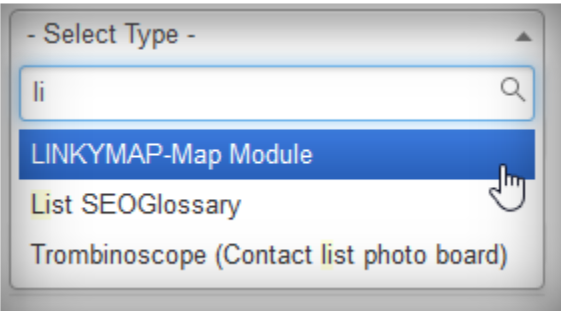


Select a map you’ve created to display the map from the menu.

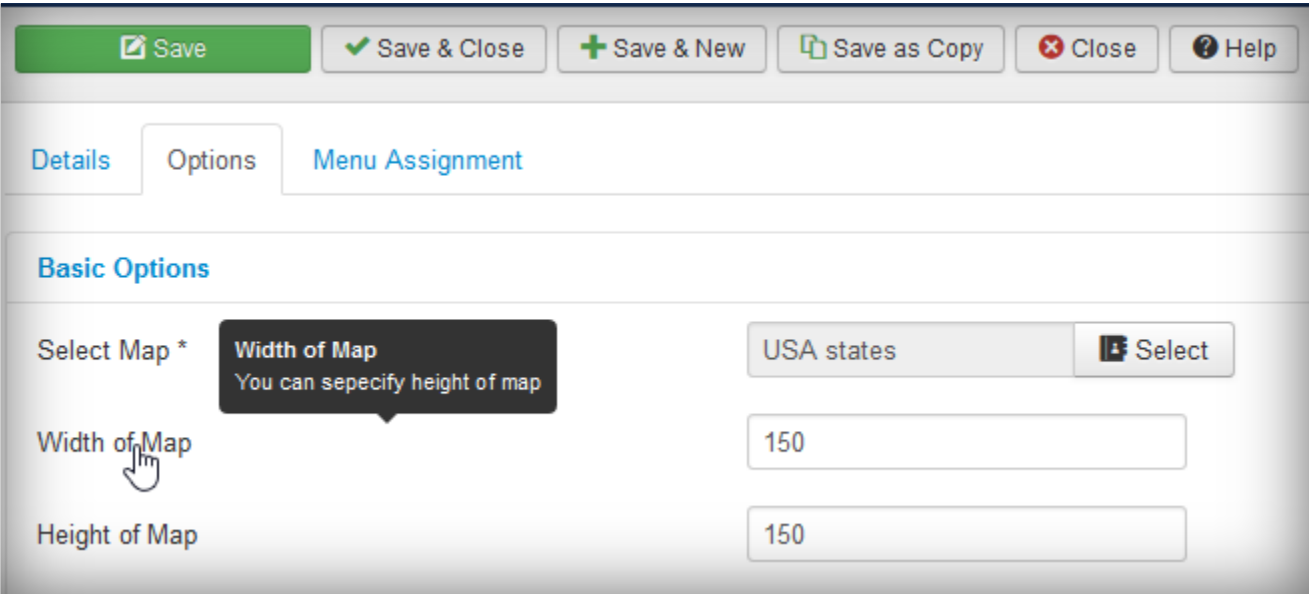


## 3.2 Using the module

The module is installed but not activated by default, go on the module manager and open the module with type: “LINKYMAP-Map module”



The module is a standard Joomla module. The parameters you can define.

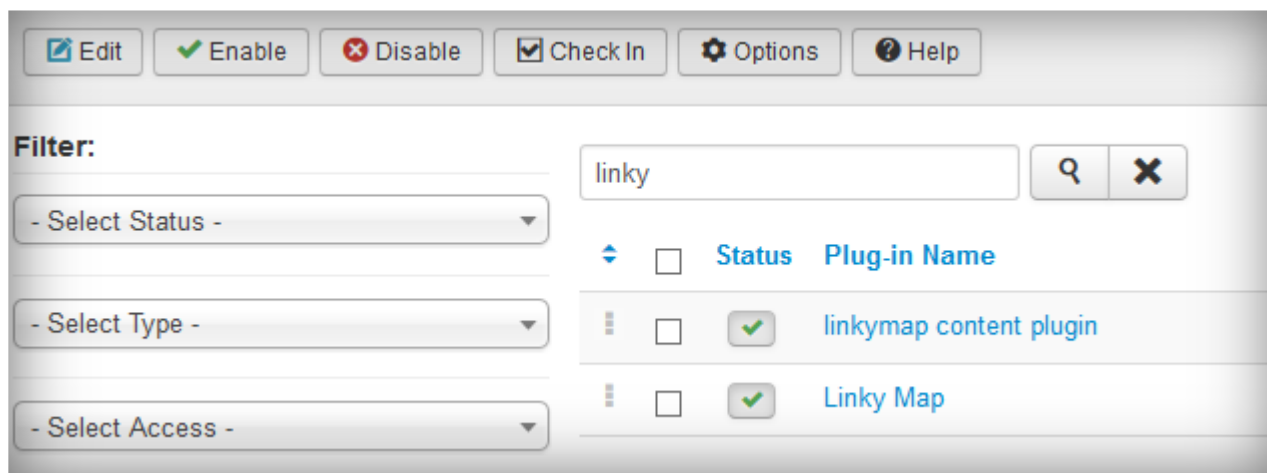


Display module on frontend:

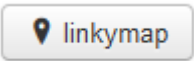


### 3.3 Using the content plugin

To use Linky Map in editor first check that editor and content plugin are both activated. The content plugin allows you to call a map in an article with a visual lightbox.



Above your editor you'll have a button that allows you to call a map.



Then just select the map to insert in your article.

maps

Search

Q

X

Ascending

50

ID

Filter:

- Select ...

		Status	Title	region	ID
	<div>☐</div>	<div>☑</div>	Europe region	world,continents	2
	<div>☐</div>	<div>☑</div>	USA	US,provinces	4
	<div>☐</div>	<div>☑</div>	France region	FR,provinces	5
	<div>☐</div>	<div>☑</div>	USA states	US,provinces	6
	<div>☐</div>	<div>☑</div>	USA map	US,provinces	8

ENJOY!