



# LOBAX THEME MANUAL

Premium Logistics and Transportation WordPress  
Theme

# CONTENTS

<b>Getting Started</b> .....	4
Theme requirements .....	4
What is included in your download pack? .....	4
Theme installation .....	5
Permalinks .....	5
Demo data import .....	6
<b>Theme options</b> .....	8
General .....	8
CSS.....	9
Page title section .....	9
Navigation .....	9
Typography .....	12
Social .....	12
Sidebar .....	15
Forms.....	16
Widgets.....	16
Blog.....	16
Portfolio .....	16
Menu .....	16
Woocommerce.....	17
Import/Export.....	17
<b>Quick styles</b> .....	18
<b>Menu</b> .....	19
<b>Posts</b> .....	23
<b>Pages</b> .....	24
<b>Custom post types</b> .....	25
<b>Woocommerce</b> .....	26
<b>Widgets</b> .....	27
<b>Plugins</b> .....	31

Enovathemes add-ons .....	31
One click demo import .....	31
Slider Revolution.....	32
WPBakery Page Builder.....	32
WPML.....	32
YITH WooCommerce Quick View .....	33
YITH WooCommerce Wishlist.....	34
<b>ICONS</b> .....	35
<b>Tips</b> .....	36
Update Visual Composer .....	36
Update your theme .....	36
Where can I find demo data?.....	37
How to separate home page from blog page? .....	37
How to switch to child theme? .....	37
Using Google Developer Tools.....	38
Write custom styles .....	39
How to find the post ID .....	39
Custom font upload .....	39
Build One Page Layout.....	40
Enable shortcodes in text widget .....	41
How to find your Purchase Code.....	41
How to enable Visual Composer Front-End Editor .....	42
Translate the theme .....	42
Useful classes .....	44
How to add slider to archive pages?.....	44
<b>Troubleshooting</b> .....	45
Missing style sheet error when installing the theme .....	45
Categories are not assigned to posts/custom post types after import .....	45
Cross Browser/Platform HTML 5 Video .....	45
After you import the menu megamenu breaks.....	46
Checking for plugin conflicts .....	46

Shortcodes show in search page results ..... 47

Can't import demo data ..... 47

Top navigation menu links do not work..... 47

Icons are not showing..... 48

Can't update Visual Composer, License Key is required ..... 48

# Getting Started

## Theme requirements

To run the theme we recommend you to have [minimum WordPress requirements](#), and also activate attached plugins: the required one is Drag and Drop Page Builder – Visual Composer. Each theme has developer license of Visual Composer, so you are free to use Visual Composer with our themes, no additional pay, it is already included into the theme. All you need to do is to install and activate plugins, when installing the theme.

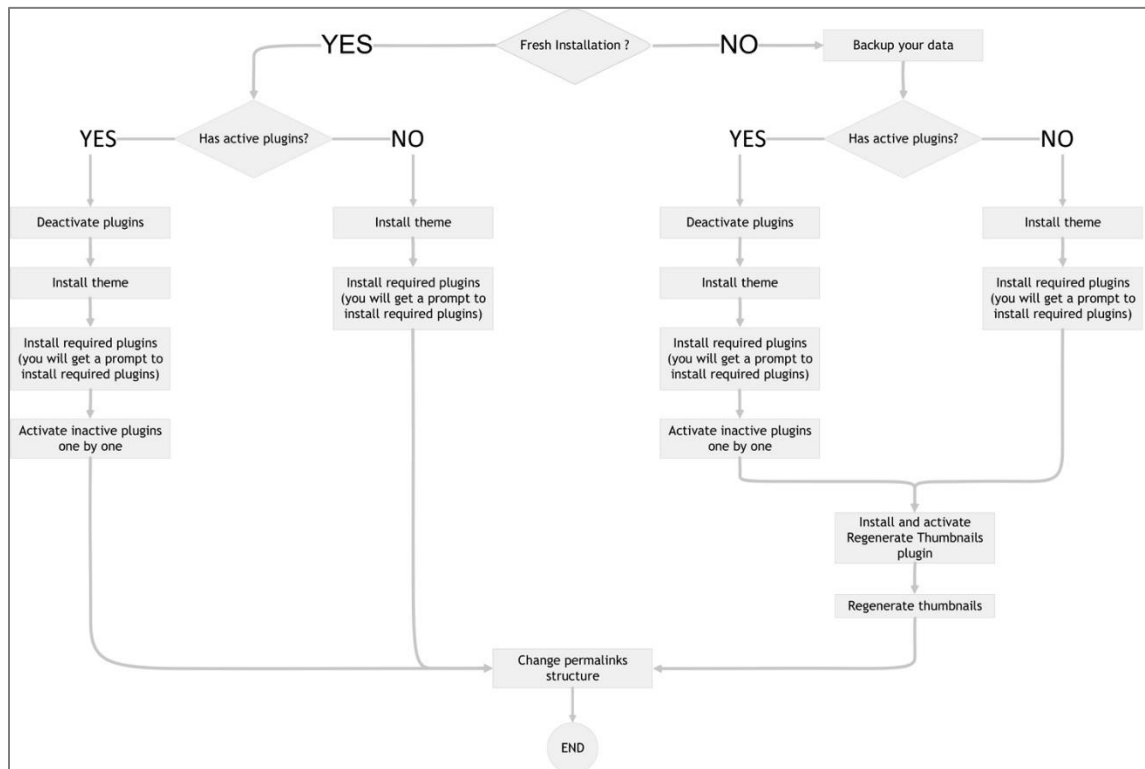
## What is included in your download pack?

Your purchased zip file contains several files and folders that need explanation

- Demo folder contains all the files for the theme demo. These files are generated for each demo of the theme
- globax folder is the theme itself
- globax-child is the empty child theme that you can use to extend the main parent theme
- Changelog.txt file contains all the changes/bug fixing that were registered during theme lifetime
- globax.zip is the zip file of the theme itself. Use this file you need to upload it from WordPress admin
- js\_composer.zip is the latest theme compatible version of Visual Composer plugin, that comes free with the theme
- revslider.zip is the latest theme compatible version of Revolution Slider plugin, that comes free with the theme
- manual.pdf – this is your help file and your starting point.
- snippets – useful code snippets

## Theme installation

In your download pack find themename.zip file. That is the file that needs to be installed. You can install theme with WordPress admin panel or you can use FTP. For FTP you need to unzip the zip file and upload to wp-content > themes. Below is presented installation process. Follow steps to make installation in right way.



## Permalinks

Once you installed theme we recommend you to change permalinks. To do that you need to go to your WordPress admin > > Settings > > Permalinks and change your permalinks to custom one: (/category%/postname%). Do not forget to save changes.

## Demo data import

To install demo data with one click you need to follow these steps:

- During installation process you need to install required plugins "One Click Demo Import" and "Regenerate thumbnails". Just follow the installation process.
- Once installed "One Click Demo Import" plugin you will see a new menu item in Appearance >> Import Demo Data
- From Appearance >> Import Demo Data admin area choose the demo you want and click the import button
- Once the import is done go to Tools >> Regen. thumbnails and click the button "Regenerate All Thumbnails"
- Almost finished. Go to Revolution slider WordPress menu and from there choose import slider, the slider demo file is a zip archive file
- And the last thing you need to do is set the footer for your demo from the WordPress admin menu >> Footers >> Choose footer (theme has footer drag and drop builder without any limitations).

All the demo files are also included in your download pack, so if you need a custom data import you can use these files.

If for some reason you need manual data import, follow these steps:

- From Tools >> Export >> WordPress choose the xml file you want (all.xml) and choose
- To import widgets you will need [Widget Importer & Exporter](#) plugin. Download it from the link and from Tools >> Widgets import/Export import the widgets.wie file of the targeted demo
- Next go to Appearance >> Theme options >> Import/Export and Import the options.json file. Open the json file using the notepad or any plain text editor and copy the content, go to Theme options >> Import/Export click the import button, paste the code and click import.
- Go to Revolution slider WordPress menu and from there choose import slider, the slider demo file is a zip archive file
- After all go to Tools >> Regen. thumbnails and click the button "Regenerate All Thumbnails"

- Also you need to assign imported menu to theme locations. Go to Appearance >> Menus from there go to "Manage Locations" and assign appropriate menu to appropriate location.
- And the last thing you need to do is set the footer for your demo from the WordPress admin menu >> Footers >> Choose footer (theme has footer drag and drop builder without any limitations).



# Theme options

Here we will highlight the most important option that need explanation. All other options are self-descriptive, so there is no need for extra explanation.

## General

### Turn off responsive images with source set attribute

Modern browsers support responsive images. As of WordPress 4.4, images are responsive by default. Whenever WordPress outputs the image through the media uploader, or whenever a featured image is generated, those sizes will be included in the image tag via the srcset attribute. But there is one little inconvenience with feature. When resizing the browser (or device from portrait to landscape) the browser will show you the last cached version of image, even if it does not feat to your layout, this can be avoided by cleaning the browser cache. So if your target is optimization leave this option as it is, but if you don't want to worry about the image srcset and browser cache activate this option. For example in our demos we turn off responsive images with source set attribute, because presentation is our key feature.

### Google map API Key

To create your API key:

- Visit the APIs Console at <https://code.google.com/apis/console> and log in with your Google Account.
- Click the Credentials from the left-hand menu.
- Enter your project name
- In the modal window click "Create credentials" dropdown menu and choose API key
- Another modal window will appear with your API key
- Copy your google API key and paste in Google map API text field

## CSS

Theme has very detailed control over custom css. Here you are able to add custom css styles to extend the main theme without modifying the core files. Also if you scroll down a little bit you will see that here you can target different device types. It helps you to take more control over the site responsive look.

## Page title section

Here you can control the main options for page title section. You can adjust the height, typography, alignment. And from each page edit screen, under the main editor you can have separate styling for each page. For Blog / Custom post type / Shop title sections options visit corresponding theme options.

## Navigation

Theme has very advanced navigation styling, were almost 99% of options are under the user control. Almost nothing is predefined, here you can style your navigation, choose the type, adjust the colors, typography, alignment, effects, etc. In the Appearance >> Quick styles section under the Header quick styles you can see how many combinations of navigation you can have with this theme. And this is not the limit – you can adjust the navigation to a custom one also. More about Quick styles you can find further in the manual.

### **Header top section**

This section is optional. You can activate it style it for any type of header with any styling of header (logo center, logo left, menu under logo, boxed header etc.)

### **Logo upload**

Theme has general logo upload. Here you can upload both the normal and retina version of logos. Also here you can have different logos for the main header, the sticky

version of it and for the mobile header. Also here you can adjust the position of the main header logo if you need it.

### **Standard header**

Standard header starts from the header variations. This is the key understanding of how the header builder works. Think about the variations as header different styles. For example here you can control the logo alignment, the menu position, activated boxed version and etc. The options are self-descriptive and the variation styling can be found in Appearance >> Quick styles >> Header Quick Styles. All other options here refer to styling and are self-descriptive. So play around these options to style your header or use the Quick styles to get some ideas of what can be done with these options.

### **Transparent header**

Here you can adjust transparent header styles and activate transparent header version for each page from page edit screen, under main editor (page extended options). And for blog/projects you can activate the transparent header right from this section.

### **Woocommerce mini cart**

If you want to have shop in your site you may probably want to have the dropdown user cart with amazing AJAX information reload. Here you can control the styling of the cart and also control the visibility of it. This option refer to the standard header and to the full screen menu.

### **Megamenu**

Here you can have separate styling for your megamenu. Control the typography, colors etc.

### **Mobile header**

Mobile header is very similar to the standard header, only here you control the mobile styling

### **Custom language switcher**

Theme supports WPML plugin and we created custom language switcher for header. You can have different styling here and control the visibility of it.

### **Sidebar menu**

If you activate the sidebar menu you will no longer have the standard menu. Here you can upload separate logo for the sidebar menu, control the alignment of sidebar itself along with the content And have custom Sidebar copyright. Here you can add even shortcodes.

### **Fullscreen menu**

Once activated fullscreen menu you will no longer have the standard menu. And here everything is almost similar to the sidebar menu styling. The difference is that the logo comes from the general logo upload subsection.

### **Footer menu**

Footer menu in the theme comes as a shortcode that you can put in the footer builder in any area. So that is why no need for extra options, Footer menu is simple, but useful, so the controls are.

## Typography

Typography options are simple, here you can adjust the font family, sizes, line –height – all the required typography options are present here. You can have different sizing for headings and also different font family.

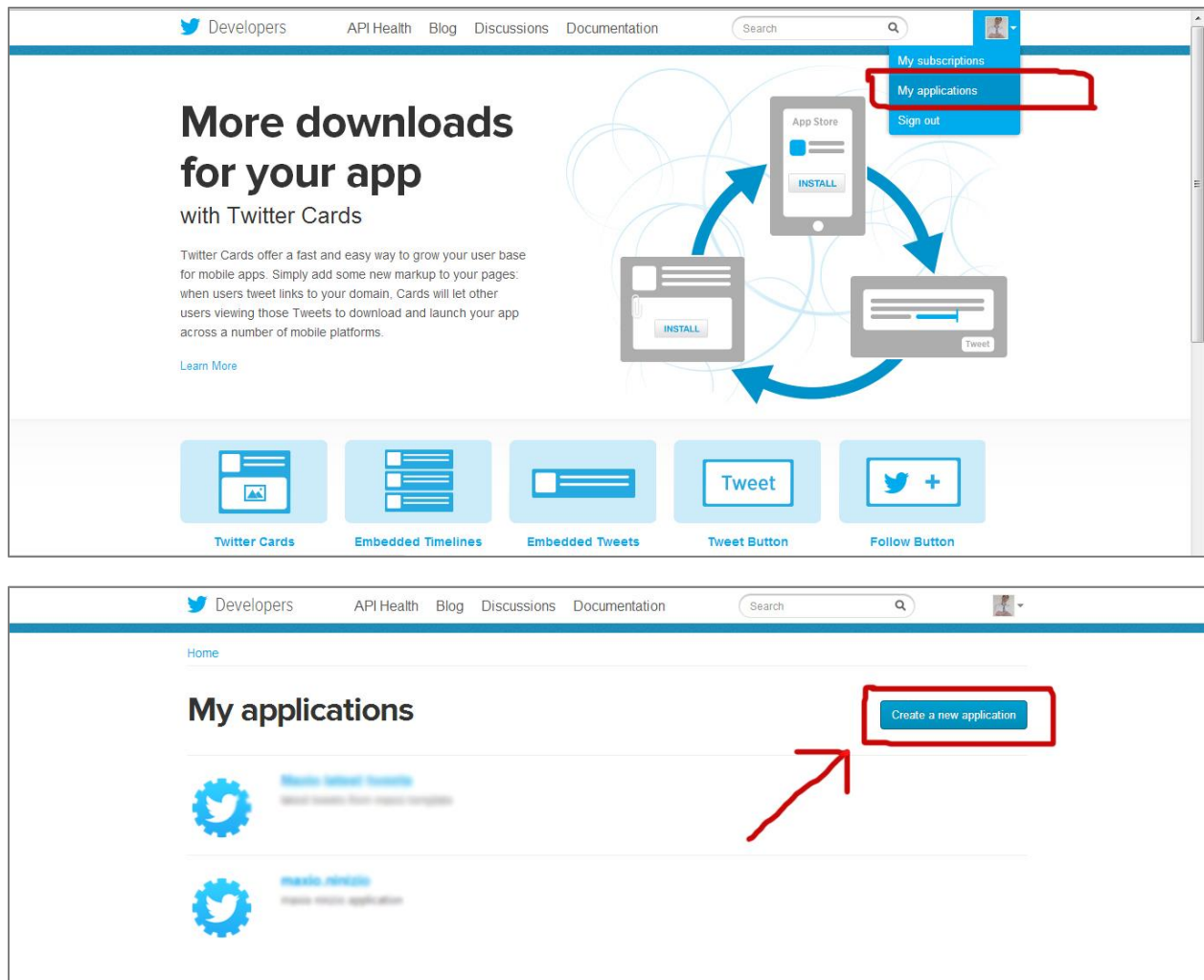
## Social

Social options are simple too. The most complex section here is the twitter configurations.

Recent tweets are presented in theme as shortcode and widget. You can put recent tweets in content area and also in widget areas. But both recent tweets widget and recent tweets shortcode needs to be configured correctly to work. The most important configuration of this element can be found in Appearance >> Theme options >> Social

This option group gives you control over social elements in your website. First option is recent tweets customization. To get configuration options you need to create a twitter app and get twitter API attributes. Don't panic, we are going to cover this process step by step:

- Visit the Twitter Developers Site <http://dev.twitter.com>
- Sign in with your Twitter Account
- Go to "My Applications"



Fill in your Application Details. It's been easy so far, but this screen often makes people confused. Don't worry, it's a lot easier than you think. First of all you need to give your app a unique name (one that no one else has used for their Twitter app). Since we're going to create app for personal use and not one that other people can register and use, just put your domain name in or perhaps even your name. You don't have to worry much about the description you can change this later. Put your website in the website field don't worry that it isn't (as Twitter ask) your application's publicly accessible home page. However, this website will be where your app is hosted. Ignore the Callback URL field. Once you've done this, make sure you've read the "Developer Rules Of The Road" blurb, check the "Yes, I agree" box, fill in the CAPTCHA (don't you just love them) and click the "create your Twitter Application" button. Hurrah!

The screenshot shows the Twitter Developers website with the 'Create an application' form. The page has a blue header with navigation links: Developers, API Health, Blog, Discussions, and Documentation. A search bar is on the right. Below the header, a breadcrumb trail reads 'Home → My applications'. The main heading is 'Create an application'. The form is titled 'Application Details' and contains four fields: 'Name: \*', 'Description: \*', 'Website: \*', and 'Callback URL:'. Each field has a text input box and a small explanatory text below it. The 'Name' field note says 'Your application name. This is used to attribute the source of a tweet and in user-facing authorization screens. 32 characters max.' The 'Description' field note says 'Your application description, which will be shown in user-facing authorization screens. Between 10 and 200 characters max.' The 'Website' field note says 'Your application's publicly accessible home page, where users can go to download, make use of, or find out more information about your application. This fully-qualified URL is used in the source attribution for tweets created by your application and will be shown in user-facing authorization screens. (If you don't have a URL yet, just put a placeholder here but remember to change it later.)' The 'Callback URL' field has no note.

Twitter Developers API Health Blog Discussions Documentation Search

Home → My applications

## Create an application

### Application Details

**Name: \***

Your application name. This is used to attribute the source of a tweet and in user-facing authorization screens. 32 characters max.

**Description: \***

Your application description, which will be shown in user-facing authorization screens. Between 10 and 200 characters max.

**Website: \***

Your application's publicly accessible home page, where users can go to download, make use of, or find out more information about your application. This fully-qualified URL is used in the source attribution for tweets created by your application and will be shown in user-facing authorization screens. (If you don't have a URL yet, just put a placeholder here but remember to change it later.)

**Callback URL:**

If entered values are valid you will be taken to your OAuth settings page, where you can get your consumer key and consumer secret, ignore other information. We now need to authorize the Twitter app for your Twitter account. To do this, click the “Create my access token” button. This takes a few seconds, so if you don’t see the access tokens on the next screen, you may have to refresh the page a few times.

Once you’re logged in, click on the downwards arrow to the right of your Twitter image and select My Applications. This is where all your registered Twitter apps will appear. Create a New Application. If you are new to the Developers site you won’t see any applications registered. Now, it’s time to create our first application. To do this, click on the big Create a new application button.

### OAuth settings

Your application's OAuth settings. Keep the "Consumer secret" a secret. This key should never be human-readable in your application.

Access level	Read-only <a href="#">About the application permission model</a>
Consumer key	<div></div>
Consumer secret	<div></div>
Request token URL	<a href="#">https://api.twitter.com/oauth/request_token</a>
Authorize URL	<a href="#">https://api.twitter.com/oauth/authorize</a>
Access token URL	<a href="#">https://api.twitter.com/oauth/access_token</a>
Callback URL	None
Sign in with Twitter	No

### Your access token

Use the access token string as your "oauth\_token" and the access token secret as your "oauth\_token\_secret" to sign requests with your own Twitter account. Do not share your oauth\_token\_secret with anyone.

Access token	<div></div>
Access token secret	<div></div>
Access level	Read-only

Recreate my access token

This access token will allow your Twitter application to read Twitter information. Once you've seen your access token and access token secret copy them and paste in appropriate text fields in option panel. The last two things that you need to do is provide twitter user ID to display tweets and number of tweets to display. To get twitter user ID just copy username from url and paste it (example <https://twitter.com/tutsplus> copy tutsplus).

## Sidebar

If you need to have general site sidebar with toggle in the header you are in right place, here you can control the alignment and styling of the sidebar. After that add widgets to Sidebar widget area to display your content. More about widgets you can find further in the manual.



## Forms

Theme has detailed control over the forms styling, with these options you can have unlimited styles for your forms. And the useful thing here is that you can have different styling of forms for the different site areas, like footer, sidebar.

## Widgets

With our theme you can take detailed control over the widgets styling. And the useful thing here is that you can style widgets differently for different site areas.

## Blog

The blog has tons of options that you can adjust as you need. You can have different layouts and styling, you can have varies effects, no limitations. All the other options here are self-descriptive, so it will not be hard for you to adjust them.

## Portfolio

Theme has built-in portfolio system. Everything here is simple and self-descriptive.

## Menu

Theme has built-in restaurant menu system. Everything here is simple and self-descriptive.

## Woocommerce

Theme supports Woocommerce and has very many options for your shop. Everything is customizable effects and even shop page designs.

## Import/Export

Whether you need to import manually the options.json file or you need to back up your theme options, you can use import/export tool.

## Quick styles

Set the header quick styles and after that adjust settings from theme options. All you need to do is go to the Appearance >> Quick styles navigate to desired style and press the save button. But before that, please remember, it will overwrite corresponding options in theme options, so if you are not sure about the style you need, please make a backup of theme options from theme options >> import/export. Click the save settings buttons once and wait till the quick styles are applied. After that you can change the options from theme options panel.

# Menu

Theme has different menu locations. Here is the list:

- Header menu
- Header menu left part (logo center menu left part)
- Header menu right part (logo center menu right part)
- Mobile menu (if you want to have different menu for mobile, you can assign your menu to Mobile menu location, but if you want your mobile menu to inherit the menu from the header main menu assign your header menu also to the mobile menu location)
- Top menu (this is the header top bar menu)
- Sidebar menu (if you want to have sidebar navigation assign your menu to the sidebar menu location)
- Fullscreen menu (if you want to have fullscreen version of navigation assign your menu to the fullscreen menu location)
- Bullets (this menu location is for one page layout bulleted navigation)
- Footer menu (assign menu to the footer location)

And now let us highlight some important parts of the main header menu. If you assign your menu to Header menu or Header menu left/right part you have additional options for the megamenu, special labels, button based styles and widgets in the header. Let's start from megamenu.

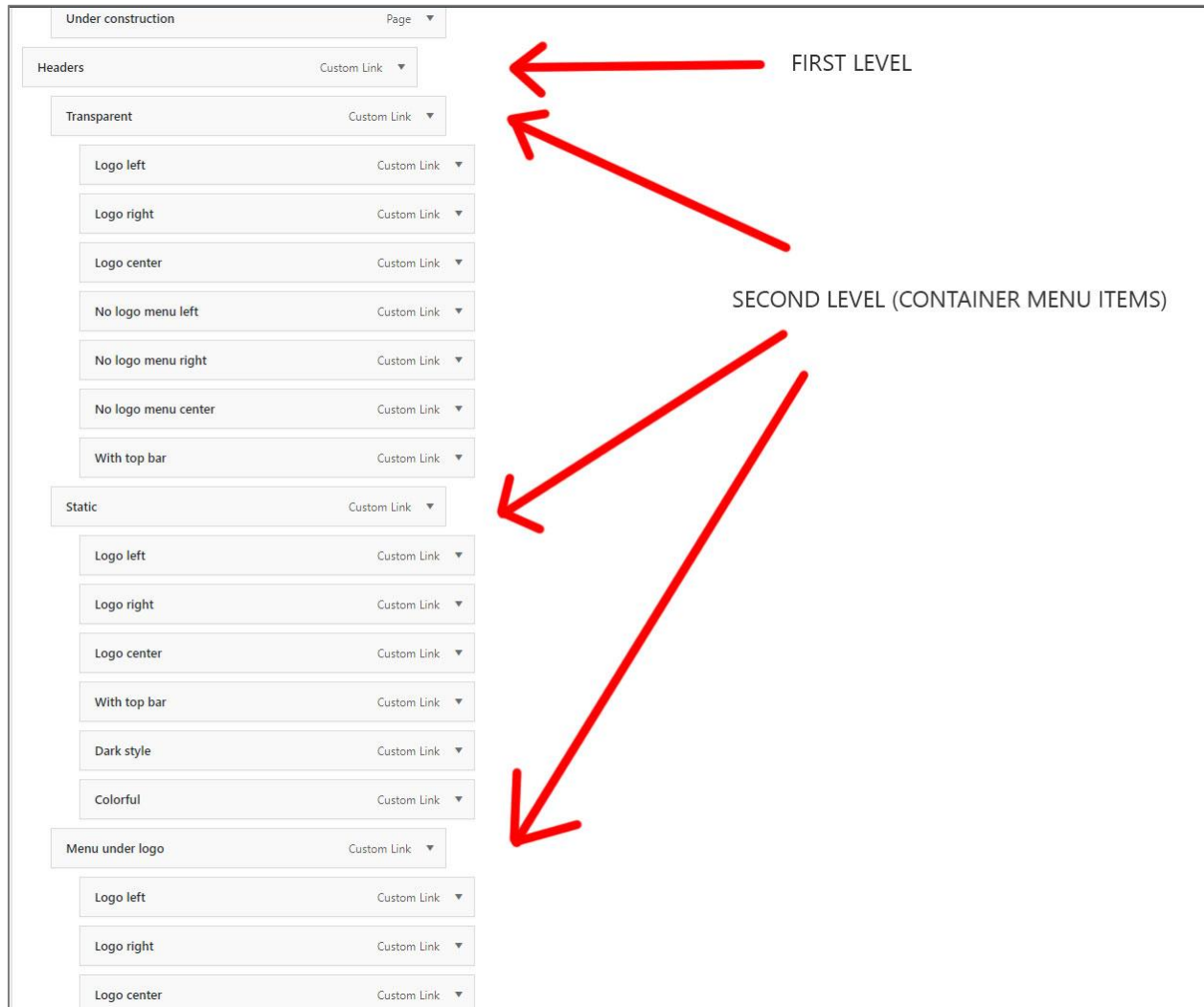
## Megamenu

For the header menu you can create a megamenu, it is easy. To do that follow these steps:

- For the top level menu item open its options and you will see a lot of custom added options for the megamenu, set the megamenu to true, choose the columns, and if you need add a picture of the megamenu.

- Second level menu items are container items of the megamenu, think of them as columns containers, so you just will need to add them to separate megamenu columns
- And after that add under the column items your megamenu items

See the images below for more details



Headers

Custom Link ▲

URL

#

Navigation Label

Headers

Title Attribute

☐ Open link in a new window/tab

CSS Classes (optional)

Link Relationship (XFN)

Description

The description will be displayed in the menu if the current theme supports it.

Megamenu

true ▼


Megamenu columns

7 ▼

Megamenu background image

Upload image

Remove image



Submenu item label text

Select Color

Font Awesome icon name

Display as button

false ▼

[Remove](#) | [Cancel](#)

Each menu item in the header main menu can have labels with different colors, you can choose the color and set the label from each menu item options. Also top level menu items can have button based styling, just set the "Display as button" option to true.

# Posts

Theme supports following post formats:

- Standard
- Aside
- Audio
- Video
- Gallery
- Link
- Quote
- Status
- Chat

And we created additional post format options that you can find under the main editor in the each post edit screen, just switch between post formats and you will see additional settings.

One important thing here: to display chat you need to enter in content area your chat with this pattern:

*Jain: hello, John, how are you?*

*John: hello, Jain, i am ok, what about you?*



## Pages

Theme has additional page extended options that you can find in each page edit screen under the main editor. If you want to build your page with the Visual Compose, please choose the correct page template from the page edit screen right sidebar, under the main publish box, make sure it is set to "Visual Composer". All other page extended options are self-descriptive, so there is no need for extra explanation.

## Custom post types

Portfolio system is very simple, it works just like regular posts, and all options are self-descriptive.

## Woocommerce

Theme supports Woocommerce at 100%, and all the options of Woocommerce work in the theme. Use the Woocommerce as with all other themes, no special offsets, only please set the correct cropping size for the images from Appearance >> Customize >> Woocommerce >> Product images

Main image width - 600

Thumbnail width - 144

# Widgets

Theme supports WordPress default widgets, Woocommerce default widgets and extends with custom:

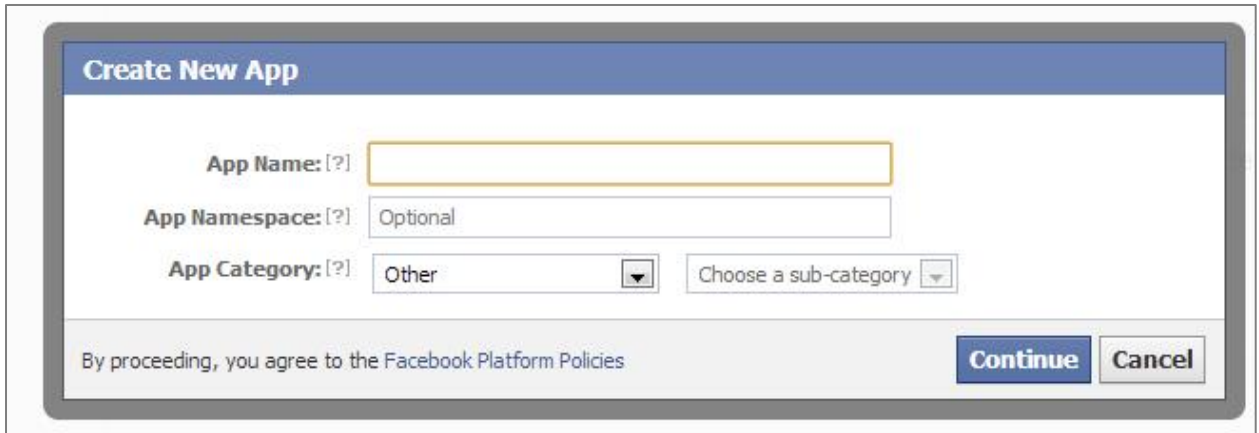
- Facebook Like box
- Fast AJAX Contact
- Instagram
- Mailchimp
- Photos from flicker
- Recent events
- Posts
- Tweets
- Registration/login
- Schedule

Almost all widgets have simple options, but we will highlight some of them:

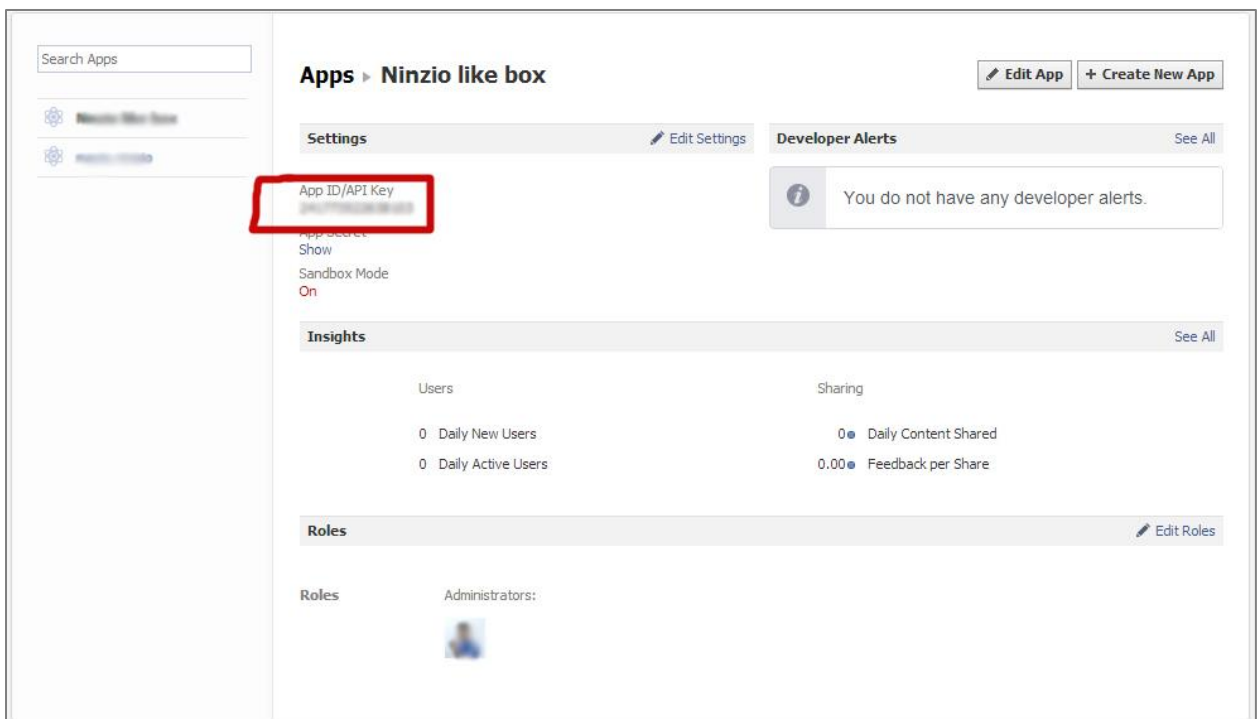
## Facebook like box

Facebook like Box widget has its options:

- Title (Just like regular WordPress widgets title)
- Facebook page URL " enter the url of Facebook fan page here, make sure it is valid url
- App Id from the App dashboard. Don't panic, we will explain how to get App Id.
- Go to this links <https://developers.facebook.com/apps/?action=create>. You should see modal window with some fields.



- Give a unique name to your app
- Ignore app namespace
- Press continue
- Enter security code
- If everything is ok, you will be taken to app dashboard, here you can take App ID



- Show faces "Specifies whether to display profile photos of people who like the page."

- Show border – Specifies whether or not to show a border around the like box.
- Show stream – Specifies whether to display a stream of the latest posts by the Page.
- Show Facebook header – Specifies whether to display the Facebook header at the top of the like box.

## **Photos from Flickr**

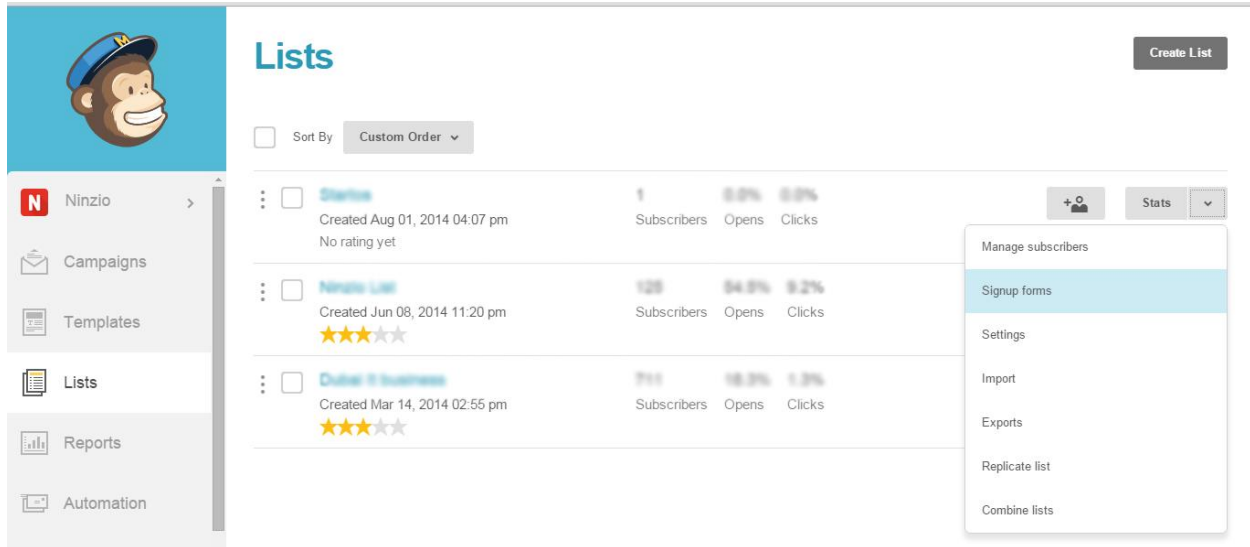
Allows to display up to 10 photos from Flickr. Just enter number of photos & Flickr username (Flickr username or Flickr id isn't actually the username you login with but rather a unique ID generated by Flickr. It's a slightly strange set of numbers at letter with a '@' symbol towards the end. For example 12341234@N12

Finding it can sometimes be tricky, often it's visible in the URL (take a look at the pic above) you see when you are browsing your photos, or there are numerous online tools that find it. Some useful online tools that will get your Flickr id are:

- <http://idgettr.com/>
- <http://www.adamwlewis.com>
- <http://flickrseek.com/>

## **Mailchimp**

To make mail chimp subscribe form work properly, you need some customization. Go to <http://mailchimp.com/>, sign in, go to lists >> Signup forms, select Embedded forms, and choose Super Slim, and from code give output action attribute from form and name attribute from input.



The screenshot shows the Mailchimp 'Lists' management page. On the left is a sidebar with navigation links: Ninzio, Campaigns, Templates, Lists (selected), Reports, and Automation. The main header includes the Mailchimp monkey logo, the title 'Lists', and a 'Create List' button. Below the header, there's a 'Sort By' dropdown set to 'Custom Order'. The central area displays a table of existing lists:

	Created	Subscribers	Opens	Clicks
<input type="checkbox"/> <b>Startups</b>	Created Aug 01, 2014 04:07 pm No rating yet	1	0.0%	0.0%
<input type="checkbox"/> <b>Ninzio List</b>	Created Jun 08, 2014 11:20 pm ★★★★☆	128	54.8%	9.2%
<input type="checkbox"/> <b>Online IT business</b>	Created Mar 14, 2014 02:55 pm ★★★★☆	711	18.3%	1.3%

On the right side of the table, there are buttons for '+', 'Stats', and a dropdown menu. The dropdown menu is open, showing options: 'Manage subscribers', 'Signup forms' (highlighted), 'Settings', 'Import', 'Exports', 'Replicate list', and 'Combine lists'.

***Please see the mailchimp.txt file in the snippets folder of your download pack***

action – **//enova.us3.list-**

**manage.com/subscribe/post?u=d4b8ae9364cc26cecf46d335&id=23c55ddae5**

name – **b\_d4b8ae9364cc26cecf46d335\_23c55ddae5**

# Plugins

Theme support almost all plugins from WordPress depository, as it was designed with the WordPress best practices. And some plugins come with the theme as recommended or required for that. Here is the list of plugins linked with this theme:

- Contact form 7
- Envato Market
- Enovathemes add-ons
- One click demo import
- Regenerate Thumbnails
- Slider Revolution
- Widgets in Menu for WordPress
- Woocommerce
- WPBakery Page Builder
- WPML
- YITH WooCommerce Quick View
- YITH WooCommerce Wishlist

Let's highlight the most important plugins

## Enovathemes add-ons

This plugin is linked with the theme and contains all the custom modifications and additions, so it is required to work with this theme

## One click demo import

This plugins makes it possible to import the demo data in the easiest way possible nowadays in the market



## Slider Revolution

Plugin comes with the theme for free, as we already bought the developer license, so you don't need to buy additional license to use this plugin within a theme.

## WPBakery Page Builder

Another premium plugin that was included in the theme for free with the developer license, no need to purchase separate user license.

## WPML

This plugin is recommended to be used if you need multilingual website. It is not free, and not included in the theme, but it is 100% supported and recommended as the best multilingual plugin in the market.

First, you need to purchase a recent version of WPML, including the String Translation and Translation Management modules.

### **Initial Setup**

Install and activate the core WPML plugins (WPML Multilingual CMS, WPML String Translation, WPML Translation Management), and then other WPML plugins that may depend on them.

Set up WPML from WPML->Languages. See WPML Getting Started Guide for complete reference, but the initial simple three-step setup is self-explanatory, asking you to choose your default language, a set of active languages, and a language selector.

### **Translating Pages, Posts and other post types**

To translate a page you need to go to wp-admin Pages and in the list you will see columns for each active language, with a pencil icon (for "edit translation") or a "+" icon

(for "add translation") next to each page. Go ahead and edit or add the translated page for "Home Default". Right now you just need to translate your page into the new language. Read this to easily duplicate your existing content.

### **Translating custom post types and taxonomies**

Theme comes with extra custom post types such as Custom post type, gallery and custom taxonomies. In order to get a similar interface for translation/duplication as for posts and pages, you need to go to WPML->Translation Management, and select the tab "Multilingual Content Setup".

### **Translating Menus and Language Switcher in Header**

WPML can synchronize menus for you. This means that if some entries, for example some pages, posts or categories, are in the English menu, WPML can generate and keep in synch menus for other languages pointing to the translated versions of these pages, posts or categories.

From WordPress Appearance->Menus you can see your existing menus and add menu translations and synchronize menus across translations.

To show the language switcher in the header you need to activate it from Theme options >> Navigation.

### **Translating theme texts and other strings in your site**

To translate strings you need to follow the procedure for Theme and Plugin Localization. Go to WPML->Theme and Plugin Localization, and click on 'Scan the theme for strings' and you will see theme strings and which ones are translated or not.

## **YITH WooCommerce Quick View**

Plugin/Extension for the Woocommerce that is recommended if you want to have AJAX quick look option on your products

## YITH WooCommerce Wishlist

Additional extension for the Woocommerce if you want to add Wish list option to your shop. Important thing hereto highlight is that you need to adjust it correct: set the position option to "Use shortcode".

# ICONS

Theme supports FontAwesome icons by default (the list of icons can be found here: <http://fontawesome.io/icons/>), but you can always extend with your custom icon set. All page elements in the theme that has icons support both the fontawesome icon and custom.

If you want to use custom fonts, first you need to include the icons into the theme. If you want to upload icons, please find the topic in the Tips section of this manual that explains how you should add custom font "Custom font upload". If you already have icons in your server or in other server, all you need is to include it in your theme. To do so go to your iconset folder and find the styles that come with your font icon, copy the styles and paste in the appearance >> customize >> Additional CSS. Make sure your icon font's paths are correct.

After that if you want to include the custom font in any element in the page that supports icon all you need to do is paste the name of the icon in the "Icon name" field and add optional prefix to your icon in the field "Icon prefix", just let the theme know, that you are using different icon pack than fontawesome.

# Tips

## Update Visual Composer

There's a difference between getting Visual Composer directly from WP BAKERY or in a theme. If you purchased from WP BAKERY, this means that you own license and you can access WP BAKERY ticket system and get direct and free updates (instant). If you got VC in a theme, that means that theme author has license and only he/she can download latest versions of VC and include it in the theme. You as a theme user, may use Visual Composer free of charge while you use theme that came with VC (because you have license for that theme).

When Visual Composer is included in the theme and you don't have separate license for it you need to wait on us to update Visual Composer on our side and push it to you.

To update Visual Composer, you don't need any license, as we already bought developer license. Each VC update is tested with our development team and included into the theme update.

Go to your Themeforest dashboard >> downloads. From there you can find new version of theme. Download it. Also in download pack you will find js\_composer.XX.zip (XX version number) file that is the latest version of VC, please remove old VC from your site and install new version.

## Update your theme

Go to your Themeforest dashboard >> downloads. From there you can find new version of theme. Download it. Use FTP to update the theme. For FTP you need to unzip the zip file and upload to wp-content > themes. You will not lose any data during update, however it is recommended to export theme options (WordPress admin >> Appearance >> Theme Settings >> Import/Export "choose export the file).

## Where can I find demo data?

When you downloaded purchased theme zip file there you should see several folders and files. If you downloaded files from ThemeForest you will get a zip file like this: themeforest-10581527-mobilz-responsive-multipurpose-theme.zip; Open that file and there you will see a list of files and folders, go to demos folder and there you will find demos folders with files included.

## How to separate home page from blog page?

By default WordPress index (front) page shows blog latest posts. But if you want you can set separate pages for blog page and front page. To do this you need to create two pages.

- Go to pages
- Add new
- Name it Homepage/Home/Whatever
- Save it
- Add new page
- Name it Blog/Whatever
- Save it
- Go to settings > reading
- Choose "Front page displays" a static page and from dropdown menu bellow (Front page) select your created homepage
- Right after that in second dropdown menu (Posts page) select your second created page "Blog"

Click Save changes button and that is all

## How to switch to child theme?

Sometime you need to extend the theme you bought with custom functionality or styles, but you can't include you changes directly into the theme files, as each time you update the theme you will lose your custom code. To be able to write custom code and

update theme without your custom data lose you need to switch to child theme. Child theme overwrites parent theme.

If you want to add custom styles switch to child theme and edit style.css of child theme. If you need custom functionality to include, again switch to child theme and add your functions to functions.php of a child theme. If you need to overwrite parent theme file, copy that file and put inside child theme folder (if file is nested inside folders, also create parent theme folders in child theme). Now edit copied file and you will not lose data when updating parent theme, and you will keep your custom data.

More about child theme you can find in [wordpress.org](https://wordpress.org)

## Using Google Developer Tools

All major browsers come bundled with developer tools, which allow us, among many other things, to locate how a style is applied to a particular element, this is very helpful if we are looking to modify said style.

Web developer tools can be accessed by pressing the F12 key, or right clicking in the page and selecting Inspect Element (in most browsers)

The layout of the developer tools differs a little between browsers, but the basics we need to use here, are pretty similar in all of them. We recommend to use Google Developer Tools.

What can do for you Google Developer Tool?

When you need to inspect for several parts of your page to find styles, that are responsible for that part, find out the structure, inspect class names or find ID of particular element on page. How does it work? Simple: just put the mouse cursor on the element you want to inspect and make a right click >> choose inspect element, and google developer console will open with styles and structures located on that part you inspected.

## Write custom styles

When you buy a theme, there is no need to be a programmer to use it, however some small skills are required to complete small custom tasks. Sometime you need to do some small modifications – apply small custom styles to elements. But how can you do it with our theme? Simple, we created options for you to make it easy.

First thing you need is the starting point – you need to know what element needs to be modified with your custom style, so you can target it. Use google developer tools to target specific elements in your page layout.

## How to find the post ID

Sometimes you need to find post id. But how can you do that? Go to your admin page and go to your posts (also custom posts/ pages) page, where you can find all your posts/pages listed. Enter the desired post/page and inspect the url of that post/page, you will find something like this: `http://yoursite/wp-admin/post.php?post=448&action=edit`. See the number 448 – that it the post ID. Your number may differ.

## Custom font upload

Most custom fonts have 3-4 formats included in its pack. They are: eot, woff, truetype, svg. Upload that files using custom font upload button (you can also upload custom font files as you upload images from WordPress media library). Only, make sure your server allows these files formats to be uploaded via WordPress.

If not, please add this code to your theme functions.php file

***Please see the `enable_custon_font_upload.txt` file in the snippets folder of your download pack***

Once you uploaded custom font you need to write font-family style, to be able to use custom font family in content.

***Please see the `custom_font.txt` file in the snippets folder of your download pack***



You need to change the path of each uploaded file to match your font family files and also give a name to your custom font family. Remember, if you want to have your custom font available in all major browsers, you need to have 4 types of custom font file: oet, woff, ttf, svg. All the patterns are included in code above, just make sure the path is correct.

After you uploaded and wrote a style for custom font family it is time to APPLY that font family to elements you want. If you want to assign custom font family to whole website as main font family go to theme options >> styling and add styles.

## Build One Page Layout

If you need to create one page layout, you need to customize some options, found in theme options >> general, and also create page itself. First thing you need to do is create a page, with sections (row) that have unique id given to it (row id option). Try to name it as unique as possible. Use prefixed, like this: nz-about, nz-team, nz-contact

After you created your page you need to tell WordPress, that you are going to use this page as a one page layout. Under page editor find an option "one page", turn it on, now WordPress understands, that this page is going to be used as one page layout.

Next you need to assign your sections to menu. And here you have three options: if you want your one page navigation to be your header menu, you need to add sections to header menu. If you want your one page layout to have aside navigation with bullets, add menu items with your sections to bullets, if you want to have sidebar menu for one page, add the menu to sidebar menu area.

First of course, you need to create a menu, go to Appearance >> Menus and create a menu. And here is the important thing: if you need top level navigation as your one page layout navigation assign your menu to Header Menu, if you want aside bullets as your navigation assign your menu to Bullets.

To add sections of one page to menu you need absolute path of your url + #id (example – <http://mysite.com#nz-about>). Only in this way your one page menu will work properly.

Now it is time to see theme options of one page layout. Go to theme settings >> general

First thing you need to do is to choose navigation type – bullets/top menu/sidebar. Here you can also adjust speed of scroll. If you want to show id in your browser url field when navigating from section to section turn on layout hash.

Again one more important option – One page menu filter. If for some reason you need a top level menu, that has both internal links of one page layout and also external links, that are not part of your one page layout, here you need to enter comma separated ids if menu items, that you don't need to include. How to find menu ids? Use google chrome developer tool to inspect a menu item and find out id.

One more important thing – if you choose one page bullets you need to give a title to menu item to make it visible on hover. Go to Appearance >> Menus, from screen options check title and in title write menu items names. That name will be visible in tooltip.

## Enable shortcodes in text widget

By default, the Text widget only support text and HTML. With the code below, shortcodes would be supported. Add this code to functions.php if your theme/child theme

***Please see the `shortcodes_text_widget.txt` file in the snippets folder of your download pack***

## How to find your Purchase Code

To find your license key/purchase code you need to log into your ThemeForest account and go to your "Downloads" page. Locate some of the our themes you purchased in your "Downloads" list and click on the Download and next on the License Certificate&purchase code link in drop-down menu.

After you have downloaded the certificate you can open it in a text editor such as Notepad and copy the Item Purchase Code.

## How to enable Visual Composer Front-End Editor

By default themes come with Visual Composer Front-End Editor disabled. This is needed, as theme have custom elements (like carousels, progress bars etc.), that extend Visual Composer. Visual Composer Front-End Editor was designed for core Visual Composer elements, but not for custom elements, like our elements, and this is the key point, why we cannot integrate their elements with Visual Compose Front-End Editor. But if you need Visual Composer Front-End Editor, you can enable it by removing the code bellow:

***Please see the `vc_disable_frontend.txt` file in the snippets folder of your download pack***

This code is located in you theme folder >> includes >> enova\_vc.php file at line 3

## Translate the theme

Need to translate the theme into another language? No problem, it's fully localized and translation ready. Follow the simple steps below:

- Download and install PoEdit. (PoEdit is a free software and its available for Mac, Windows and Linux. Download PoEdit from <http://www.poedit.net/download.php>)
- Create a new catalog (the local language file)
- Start PoEdit and click on the File menu and select the option New catalog from POT file.
- This will open the file dialog box. Go to the languages folder of the theme. Select All Files from the file dialog box, and open the en\_US.po file in the languages folder.
- Now PoEdit will ask you for various configuration options. The most important thing here is to choose the correct country and language you are translating to.
- In the remaining fields of the configuration window, fill the required information or just leave them empty.
- Now click on the Paths tab and change the path variable to the place where your theme files are located.
- Then press OK.

Now PoEdit will ask you to name the file. Its very important to name the file correctly. The naming convention for these files is themename-languageCode\_countryCode. The language code must be in lower case while the country code should be in upper case. So, if you are translating the theme for UK English, the file name will be globax-en\_UK. Similarly, for translation to French, it will be globax-fr\_FR and so on. You can find a list of language codes and country codes here <http://www.w3.org/WAI/ER/IG/ert/iso639.htm>.

After that, you'll see the standard interface of PoEdit where the left panel contain the strings in the original language and the right panel containing the translations. The right panel will be empty as we haven't started the translation yet.

Start translating each string one by one. Click on the first string and press Tab button. This will take you to the translation box in the bottom. Type the translation here. Your change will reflect immediately in the right panel. Once you are done with this string, press Enter and move on to the second string. Repeat this procedure until all the strings are translated. After the translation is done, save the file.

Due to new Themeforest requirements, we have to separate theme custom functionality (custom post types, elements). All this functionality is located in enova addons plugin that comes with the theme. You will need to install it when installing the theme. Some strings of the theme, like shortcodes strings, custom widgets are located in wp-content >> plugins >> enovathemes-addons >> languages >> enovathemes-addons.po file. You will need to translate this language file too. The process is the same as theme language file translating, the only difference is that your translated file naming for enovathemes-addons plugin should be like this – enovathemes-addons-xx\_XX.po, where xx\_XX is your language code.

Then open wp-config.php located in the root of your WordPress installation and change line 72 to reflect your new language file.

***Please see the language.txt file in the snippets folder of your download pack***

When you save the catalog file in Step 3 above, PoEdit will create two files, a .po file and a .mo file. Upload both these files to the languages directory of your theme/plugin in wp-content >> languages >> themes/plugins >> themename/plugin name. Also upload wp-config.php to the root of your WordPress installation and you'll be good to go.

## Useful classes

Sometimes ultimate team with tons of options is not enough to complete your page layouts tasks at 100% that is why we created very handy small classes that do big job:

Device width	hide	Text-align-left	Text-align-right	Text-align-center
<b>X &lt;= 320</b>	hide320	text320-align-left	text320-align-right	text320-align-center
<b>X &lt;= 479</b>	hide479	text479-align-left	text479-align-right	text479-align-center
<b>480 &lt;= X &lt;=767</b>	hide480-767	text480-767-align-left	text480-767-align-right	text480-767-align-center
<b>X &lt;= 639</b>	hide639	text639-align-left	text639-align-right	text639-align-center
<b>640 &lt;= X &lt;=767</b>	hide640-767	text640-767-align-left	text640-767-align-right	text640-767-align-center
<b>X &lt;=767</b>	hide767	text767-align-left	text767-align-right	text767-align-center
<b>768 &lt;= X &lt;=1023</b>	hide768-1023	text768-1023-align-left	text768-1023-align-right	text768-1023-align-center
<b>X &lt;=1023</b>	hide1023	text1023-align-left	text1023-align-right	text1023-align-center
<b>X &gt;=1024</b>	hide1024	text1024-align-left	text1024-align-right	text1024-align-center
<b>1024 &lt;= X &lt;=1279</b>	hide1024-1279	text1024-1279-align-left	text1024-1279-align-right	text1024-1279-align-center
<b>X &lt;=1279</b>	hide1279	text1279-align-left	text1279-align-right	text1279-align-center
<b>X &gt;=1280</b>	hide1280			

## How to add slider to archive pages?

From WordPress Appearance >> Archive slider you can choose slider for any archive bases post (blog, custom post type, shop).

# Troubleshooting

## Missing style sheet error when installing the theme

A common issue that can occur with users new to installing WordPress themes is a "Broken theme and/or stylesheets missing" error message being displayed when trying to upload or activate the theme. This error message does not mean that the theme you have purchased is broken, it simply means it has been uploaded incorrectly. Luckily, there is a very easy fix.

## Categories are not assigned to posts/custom post types after import

This is known issue of the WordPress import, to fix it, find the wp-import-fix.php file in the snippets folder and upload it in the site root, after that navigate in the browser window to the `www.yoursite.com/wp-import-fix.php` the script will fix the empty category bug, after that don't forget to remove the file from the site root.

## Cross Browser/Platform HTML 5 Video

All these video formats are not supported among all devices and browsers. That is why, to make html5 video cross-browser and cross-device compatible you need to follow these steps

- Download <http://www.mirovideoconverter.com/> video converter and install it. It has very intuitive and simple interface
- Convert your video to all formats (mp4/m4v, ogg/ogv, webm)
- Converter will generate ready to use html index page, you don't need that page, you need only videos
- You can find it in html5video of generated folder
- Open your .htaccess file (your WordPress installation root) in notepad or similar editor and paste this code

***Please see the `html5_video.txt` file in the snippets folder of your download pack***

## After you import the menu megamenu breaks

If your theme supports megamenu, it may have problems with WordPress import tool. When imported xml file, by default WordPress does not understand extra megamenu fields, so it just ignores them. You need to customize megamenu by hand. So set megamenu option of first level menu item to true, choose columns number, add background image and your megamenu is ready!

## Checking for plugin conflicts

At the time of writing there are 38,000 plugins in the WordPress repository, more than 3,500 on Themeforest and quite a few scouring the internet unchecked. Themes for WordPress are just too many to even mention. It stands to reason that not all combinations will work, in this article we'll see how we can check for plugin conflicts and single the odd one out.

- Start by disabling all plugins, if you have caching plugins active, first empty the cache and then disable the plugin entirely, emptying your browser's cache as well is a good idea.
- Refresh your permalinks
- Go back to your site and check, the issue should be gone.
- Start enabling plugins one-by-one and check if the problem appears after each plugin activation.
- When the problem reappears, the last activated plugin is either the one causing the problem, or its combination with the other plugins, or the theme is not working.
- Disable and/or remove the problematic plugin and continue on problem free. If the plugin provided a function you absolutely need, you might want to look for

an alternative in the WordPress plugin repository, and chances are there's more than one plugin doing the same thing.

## Shortcodes show in search page results

To remove any code from search results you need to give some short description of pages. Go to each page edit screen, from screen options check excerpt and scroll down you will see a text area with Excerpt. Write some small description of the page, and that description will be available in search results without code.

## Can't import demo data

When you got issues with demo data import with "One click demo install", you should check your php.ini configurations at your server/hosting. We recommend to change these options in your php.ini file (if you don't have access to your php.ini file, ask your hosting/server provider, they should configure it for you):

- max\_input\_vars (default is 1000) set to 3000
- post\_max\_size (default is "8M") set to 2000M
- upload\_max\_filesize (default is "2M") set to 64M
- max\_execution\_time (default is "30") set to 180
- max\_input\_time (default is "-1") set to 180
- memory\_limit (default is "128M") set to 3000M

## Top navigation menu links do not work

If your header links are not clickable, you probably activated one page layout with header top navigation on pages. First check if links does not work on each page. Probably they are not working on several pages, but not all. Go to that pages edit screen, and under editor find option one-page layout, uncheck that option, save the page and now on that page links should work fine. Do the same for other pages.



## Icons are not showing

Due to some server's configurations, icons font can't be loaded properly, as a result your icons don't show in your site. To solve this issue, go to your hosting/server admin page, find .htaccess file in your installation folder, open it and paste this code:

***Please see the icons.txt file in the snippets folder of your download pack***

## Can't update Visual Composer, License Key is required

There's a difference between getting Visual Composer directly from WP BAKERY or in a theme. If you purchased from WP BAKERY, this means that you own license and you can access WP BAKERY ticket system and get direct and free updates (instant). If you got VC in a theme, that means that theme author has license and only he/she can download latest versions of VC and include it in the theme. You as a theme user, may use Visual Composer free of charge while you use theme that came with VC (because you have license for that theme).