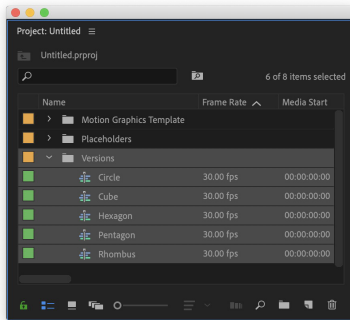


Hello.

Thanks for buying my template. Please read this help file.

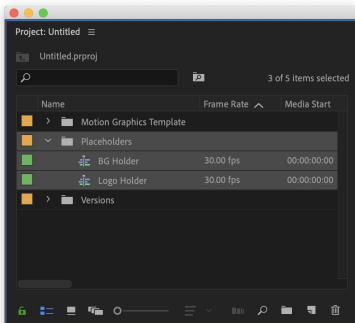
My contact email: parango.bma@gmail.com

1) Choose version



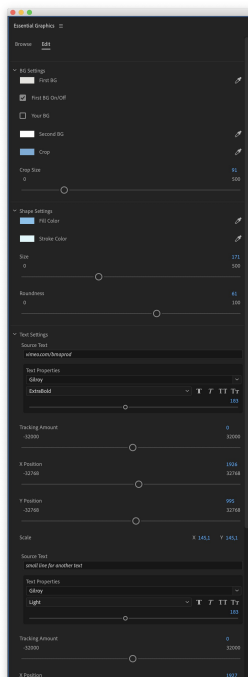
In folder "versions" you will find all versions of logos

2) Logo and BG customization



Just Drag and Drop your logo into "Logo Holder" composition.
Drag and Drop your BG into "BG Holder" composition.

3) Template and Text settings



Window > Essential Graphics